

Test Report No. 7191038646-MEC-12-TYW
Dated 10 AUG 2012



PSB Singapore

Choose certainty.
Add value.

Note: This report is issued subject to the Testing and Certification Regulations of the TÜV SÜD Group and the General Terms and Conditions of Business of TÜV SÜD PSB Pte Ltd. In addition, this report is governed by the terms set out within this report.

SUBJECT:

Testing of Steel Conduit Pipe Samples

TESTED FOR:

United U-Li Impex Pte Ltd
36 Kallang Place
Singapore 339164

Attn: Mr Amos Tan

METHOD OF TEST:

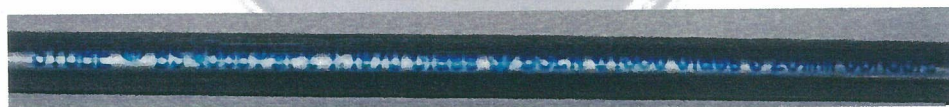
IEC 61386-1 : 2008 - Conduit systems for cable management – Part 1: General requirements

TESTS CONDUCTED AS ACCORDANCE TO IEC 61386-1:

1. Marking
2. Dimensions
3. Construction
4. Compression Test
5. Bending Test
6. Impact Test
7. Bonding Test
8. Dielectric & Insulation Resistance
9. Corrosion Resistance Test
10. IP 30 Test

SAMPLES DESCRIPTION:

6 length and 6 bend samples each of nominal diameter 20mm and 25mm steel conduit pipe samples were submitted by United U-Li Impex Pte Ltd on 17th July 2012 for testing.



Diameter 20mm steel conduit pipe



Diameter 25mm steel conduit pipe

Wat Q



TÜV SÜD PSB

Laboratory:
TÜV SÜD PSB Pte. Ltd.
No.1 Science Park Drive
Singapore 118221

Phone : +65-6885 1333
Fax : +65-6776 8670
E-mail: testing@tuv-sud-psb.sg
www.tuv-sud-psb.sg
Co. Reg : 19902667R

Regional Head Office:
TÜV SÜD Asia Pacific Pte. Ltd.
3 Science Park Drive, #04-01/05
The Franklin, Singapore 118223
TUV®